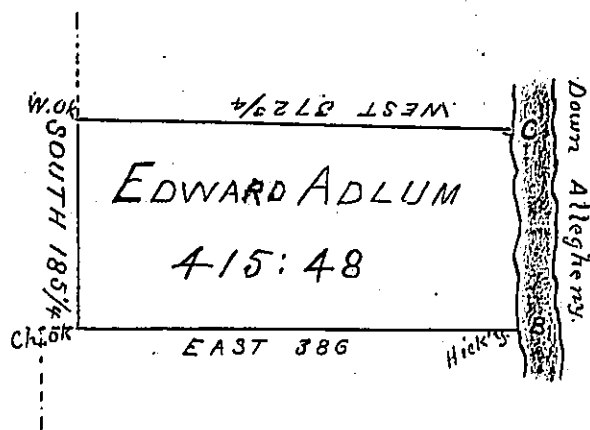


C 1-258

THOMAS ADLUM



COURSES ON THE RIVER  
FROM B. UPWARDS TO C.

N. 2° E.	30
N. 7° W.	62
N. 4° W.	94
	<hr/>
	186

RICHARD ADLUM

Pg-66

*Surveyed on the 23<sup>rd</sup> day of June 1795 the above described Tract of Land in District No 6, in pursuance of a Warrant to Edward Adlum, dated 20<sup>th</sup> December 1793 containing Four Hundred Fifteen Acres & Forty Eight Perches and allowance of Six Per Cent*

*Saml Nicholson*

*To Daniel Brodhead Esqr  
Surveyor General*

*D.S.*

IN TESTIMONY that the above is a copy of the original remaining on file in the Department of Internal Affairs of Pennsylvania, made conformably to an Act of Assembly approved the 16th day of February, 1833, I have hereunto set my Hand and caused the Seal of said Department to be affixed at Harrisburg, this *twenty fourth* day of *August* 1903.

*Geo. P. Brown*  
Secretary of Internal Affairs.